

MIDI Masonry (180–259 mm)

Classification/system components

- Designation:** Approved permanent scaffold anchor system for ETICS, ventilated curtain wall façade and cavity wall according to DIN 4426 (German standard).
For use on masonry with a characteristic load-bearing capacity of 5.0 KN of the strength class 28 in the format 3DF.
- Add. feature:** for structure thicknesses from 180–259 mm
- rocketplug:** Plastic frame plug (4 units)
- rocketbase:** Load distribution plate, galvanised steel, 330 x 280 mm
- rocketbody:** Anchor body, plastic (glass-fibre reinforced)
- rocketbolt:** Eye-bolt, special steel, ø 18 mm
- rocketseal:** Plug, plastic body with hex stainless steel insert
- Art. number:** 9.1.210

Accessories (available separately)

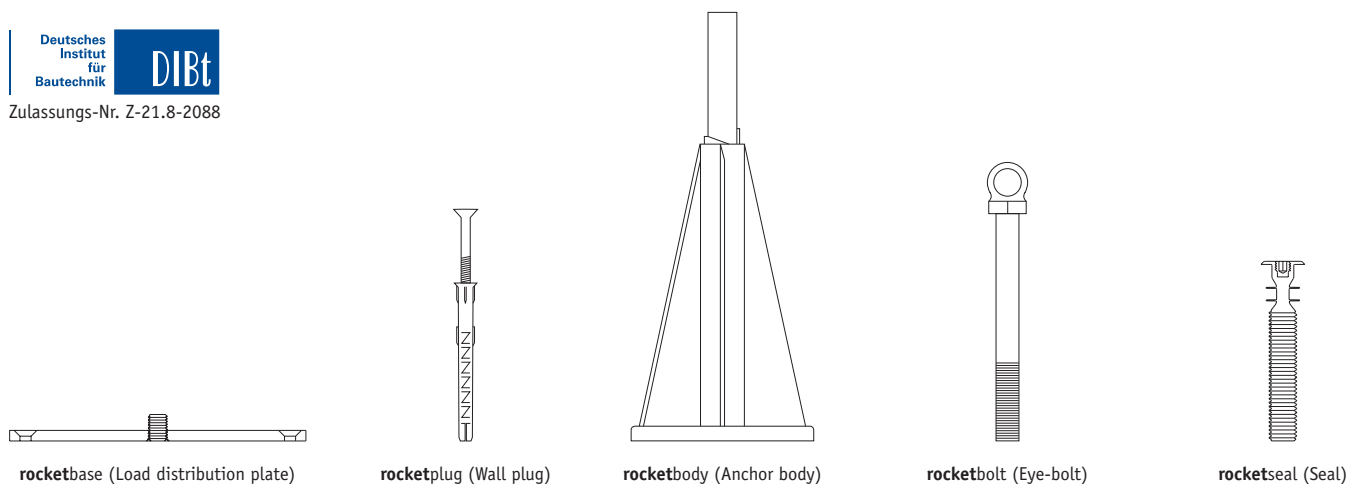
- rocketglue:** fast-hardening composite glue for initial adhesion of the load distribution plate
- Assembly set:** Available as Standard or Extended (for ETICS panels).
Necessary special tools for assembly of the **isorocket®** permanent scaffold anchor



Product description:

The **isorocket®** permanent scaffold anchor **MIDI Masonry** is an approved anchor system according to DIN 4426 (German standard) for external thermal insulation composite systems (ETICS), ventilated curtain wall façade (VCW) and cavity wall that protects the façade against damage right from the outset. **isorocket®** remains as a permanent, almost thermal bridge-free anchor point integrated into the façade, which means it can be reused at any time. Thanks to its ideal force dissipation, the **isorocket®** permanent scaffold anchor not only ensures a secure hold of the construction scaffold, it can also be applied for various uses in new buildings and also later. The extensive work required to fix damage to new façades, for instance damage often caused by conventional ring screws, is now a thing of the past. The **isorocket®** permanent scaffold anchor **MIDI Masonry** is suitable for structure thicknesses of 180–259 mm on masonry. The permanent anchor system allows clean separation of the various trades and does not leave any mutual dependencies between the façade and scaffold construction.

Deutsches
Institut
für
Bautechnik
DIBt
Zulassungs-Nr. Z-21.8-2088

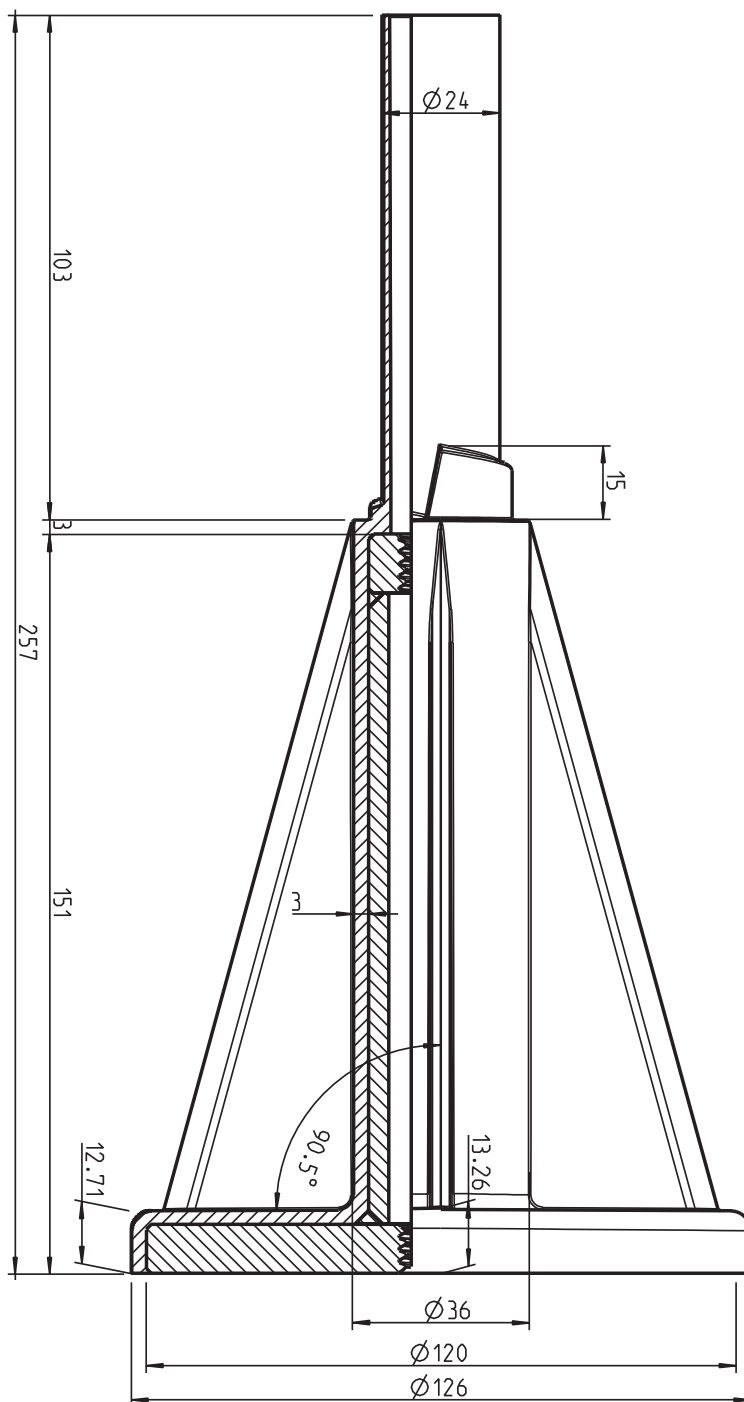


Professional permanent scaffold anchor for ETICS, VCW and Cavity wall. Approved for use on masonry according to DIN 4426 (German standard) with ideal force dissipation. Remains permanently in the façade and can be reused at any time.

MIDI Masonry (180–259 mm)

DIMENSIONS

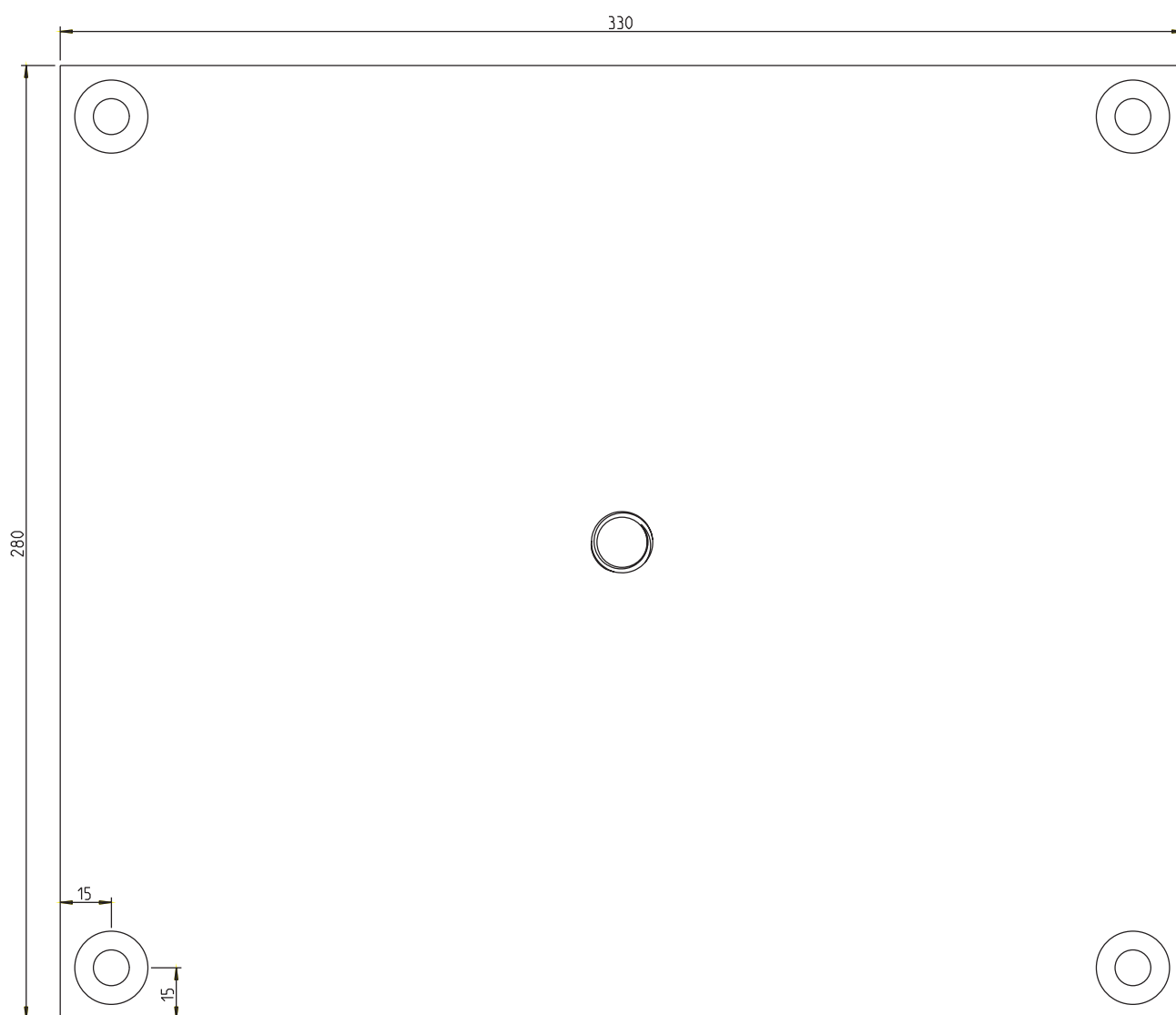
rocketbody (Anchor body)



MIDI Masonry (180–259 mm)

DIMENSIONS

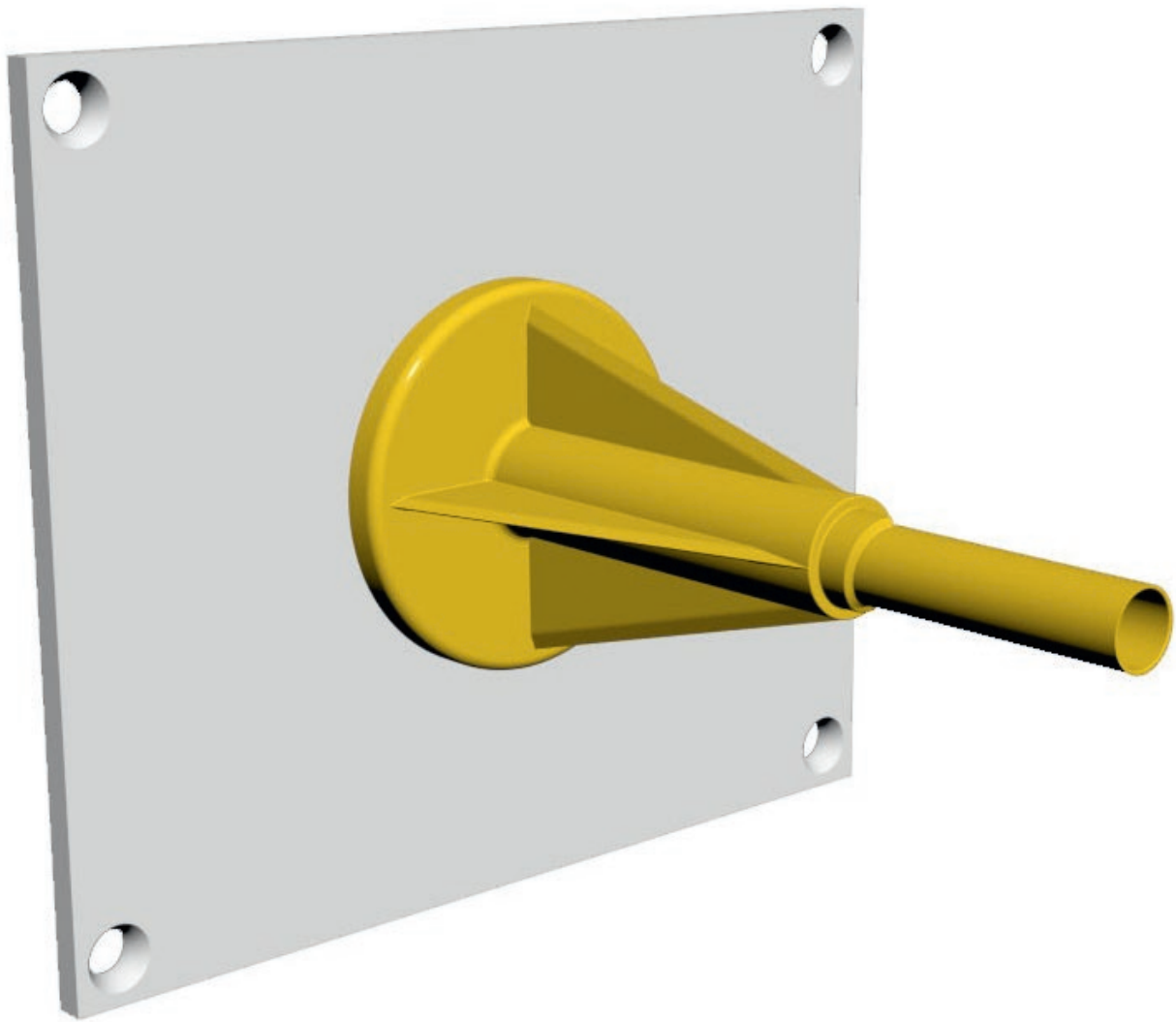
rocketbase (Load distribution plate)



MIDI Masonry (180–259 mm)

USE ON MASONRY

CAD SCREEN



The CAD data for this permanent anchor system are available for download at www.isorocket.de